

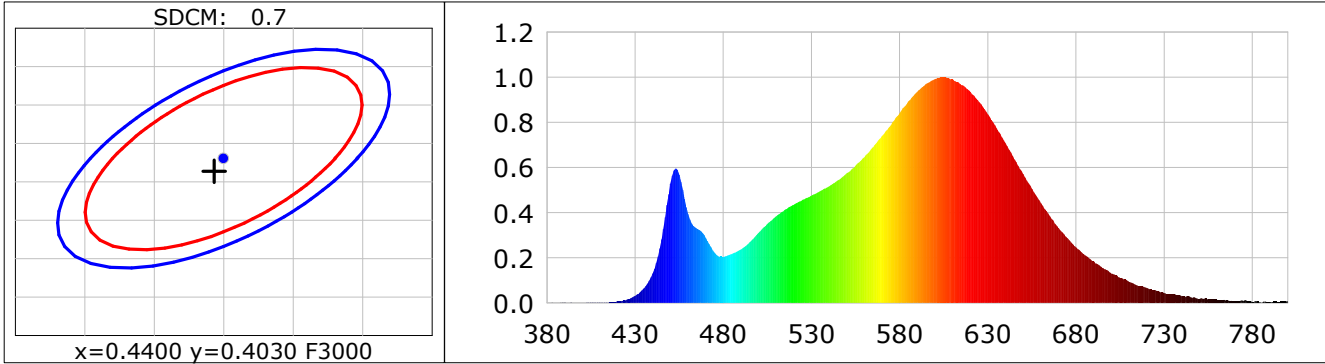
**Lightsource Test Report**

**Product Infomation**

Product Category: LED STRIP	Product Type: LED STRIP
Product Spec: LYNX 3	Product Number: 215
Manufacturer: TECSOLELED S.L.	Buyer: TECSOLELED S.L.

**CIE Colorimetric Parameters**

Chromaticity coordinates:  $x=0.4393$   $y=0.4014$   $u(u')=0.2533$   $v=0.3471$   $v'=0.5207$   
 CCT:  $T_c=2938K$  ( $duv=-0.00140$ ) Color Ratio:  $R=0.236$   $G=0.736$   $B=0.027$   
 Peak Wavelength: 605.7nm Half Bandwidth: 119.6nm  
 Dominant Wavelength: 583.6nm Color Purity: 0.523  
 CRI:  $R_a=83.1$ ,  $avgR(1\sim14)=78.2$ ,  $avgR(1\sim15)=77.9$  TM30:  $R_f=84$ ,  $R_g=95$   
 GAI:  $GAI\_BB\_8=96.3$ ,  $GAI\_BB\_15=104.7$ ,  $GAI\_EES=53.6$   
 R1 =82 R2 =93 R3 =94 R4 =81 R5 =83 R6 =92 R7 =80 R8 =58  
 R9 =8 R10=84 R11=81 R12=74 R13=85 R14=98 R15=75  
 Color Quality Scale:  $Q_a=82.8$ ,  $Q_f=84.4$ ,  $Q_p=84.3$ ,  $Q_g=91.3$   
 Q1 =78 Q2 =94 Q3 =84 Q4 =80 Q5 =83 Q6 =84 Q7 =84 Q8 =86  
 Q9 =95 Q10=91 Q11=87 Q12=84 Q13=83 Q14=73 Q15=75



**Photometric Parameters**

Luminous Flux: 668.20 lm Efficiency: 136.81 lm/W Radiant Power: 2.022 W  
 Total mains efficacy: 126.69 lm/W Energy Efficiency Class: E (EU 2019/2015)

**Electric Parameters**

Voltage: 24.000V Current: 0.2035A Power: 4.88W  
 Power Factor: 1.0000 Frequency: 0.00Hz

**Test Infomation**

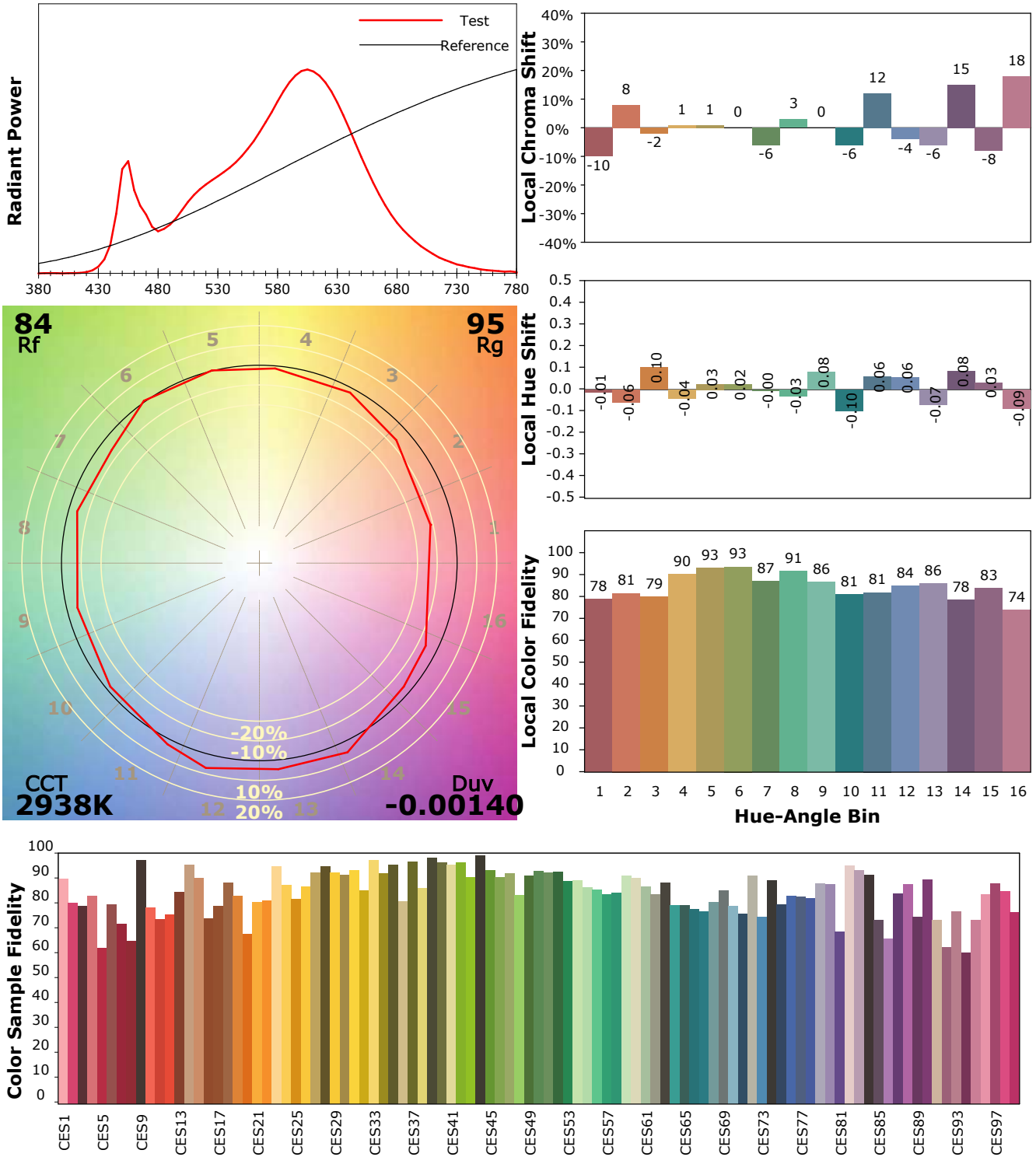
Scan Range: 380~800:1nm	Photometric Method: sphere-spectroradiometer
Stabilization Time: 0 Sec ALC.: 1.0000	Photometric Condition: Sphere diameter: 1.50m, 4PI
Max of Signal: 46380 (2281)	CCD Integration Time: 1066.68 ms

## IES TM-30-18 Color Rendition Report

**Product Information**

Product Category: LED STRIP  
 Product Spec: 21059602440503  
 Manufacturer: TECSOLELED S.L.

Product Type: LED STRIP  
 Product Number: 215  
 Buyer: TECSOLELED S.L.



Condition: Tx:18.8'C, Ti:18.4'C, R.H.:60%  
 Test Lab: TECSOLELED S.L.  
 Operator: JORDAN GIL DIAZ

Test Device: Inventfine CMS-2S (Plus)  
 Test Time: 2021-10-28 09:50:49  
 Inspector: